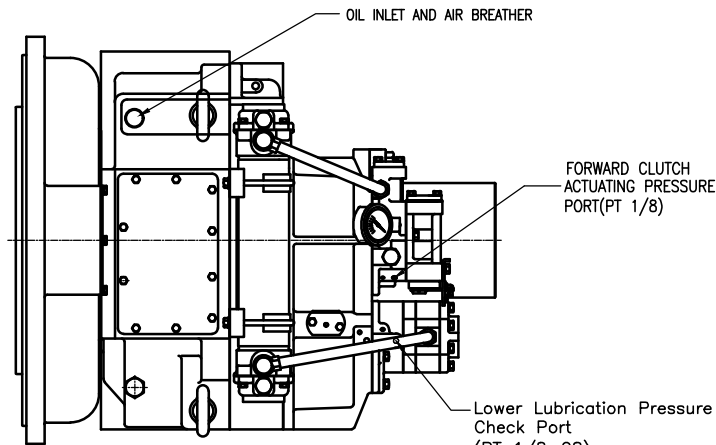
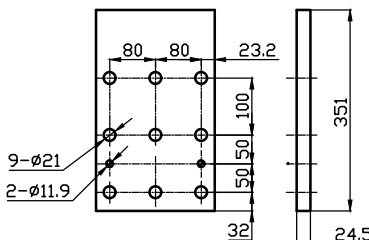
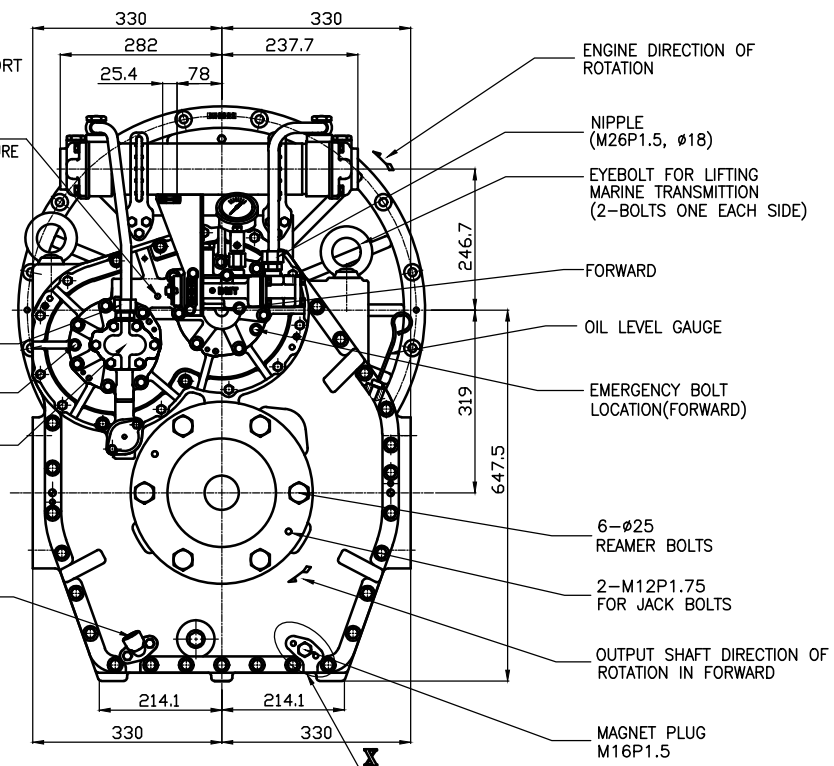
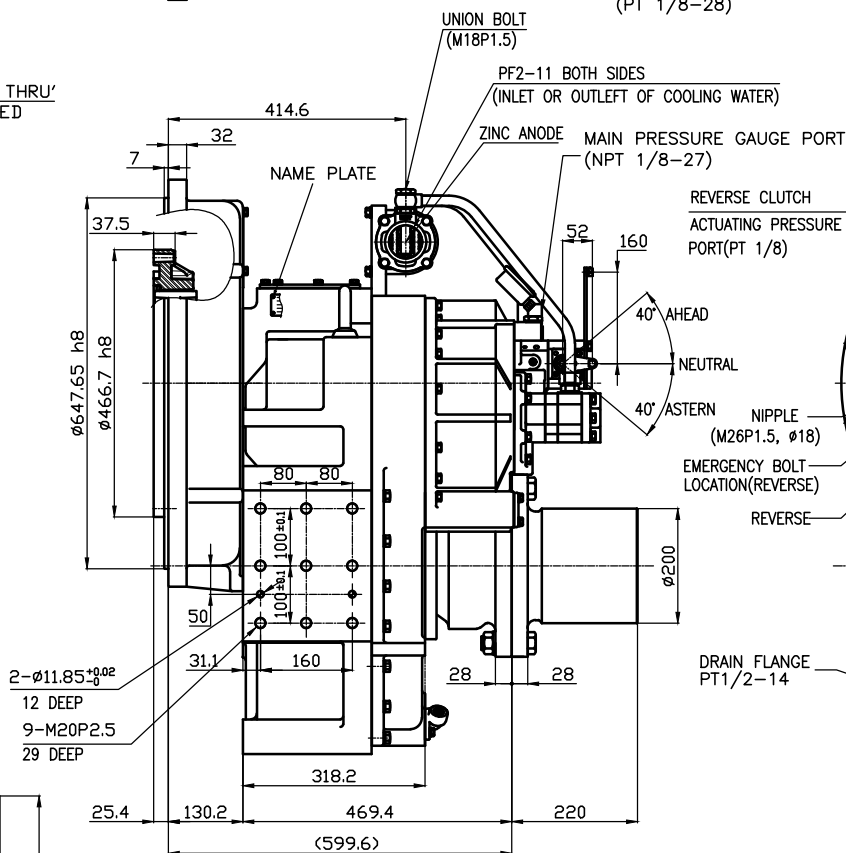
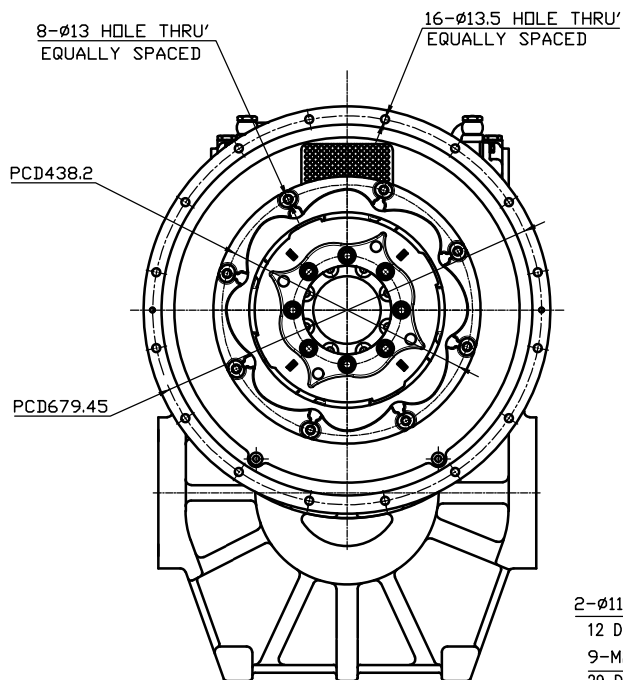


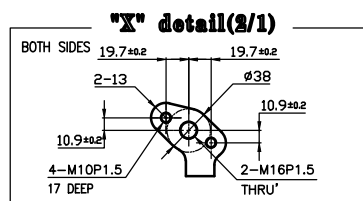
OUTPUT SHAFT COUPLING & PROPELLER COUPLING DIMENSION



| DMT330DL MARINE TRANSMISSION SPECIFICATION | | | |
|--|--|-----------------------------|--|
| GEAR RATIO | 2.61, 3.10, 3.56, 4.13, 4.59 | | |
| TOTAL WEIGHT | APPROX. 806 Kg(DRY) | | |
| OIL CAPACITY | APPROX. 17.5 L | | |
| OIL VISCOSITY | SAE #30 | | |
| OIL PRESSURE | 1.96 ~ 2.54 MPa | CLUTCH OIL | |
| DIRECTION OF ROTATION | INPUT | C.C.W VIEWED FROM THE STERN | |
| | OUTPUT | C.W VIEWED FROM THE STERN | |
| OIL CHANGE INTERVAL | THE FIRST 100HOURS OF INITIAL OPERATION AND EVERY 1000HOURS THEREAFTER | | |
| SHIFTING LIMIT | UNDER 50% OF THE RATED ENGINE SPEED | | |
| OIL COOLER | WATER FLOW | 90 ~ 120L/m | |
| | TEMPERATURE OF COOLING WATER | MAX 32° | |
| OPERATING TORQUE OF SHIFTING LEVER | UNDER 2.94Nm | | |



BRACKET DIMENSION



REMARK
 1. HOUSING : SAE# 0
 2. DRIVING RING : SAE 14"
 3. COUPLING TYPE
 -CENTA Flex Coupling : 77268803

| TOLERANCE ON | | | | PART NO. | | PART NAME | | QTY | | MATERIAL | | SIZE | | REMARKS | |
|----------------|----------|--------|--|------------|------|---------------------|--|--------------|--|--------------------|--|-------------------|--|---------|--|
| FRACTIONS | DECIMALS | ANGLES | | NO. | REV. | | | | | | | | | | |
| ± | ± | ± | | DMT330DL | | MARINE TRANSMISSION | | TYPE | | DMT330DL | | ORIGINAL DWG. NO. | | | |
| APPROVED BY | | | | DATE | | SCALE | | DRAWN | | DESIGNED | | NAME | | REV. | |
| TW.KIM | | | | 2018.08.08 | | 1/1 | | DWG. NO. | | 33000GDLA-E-014CFR | | 000 | | | |
| D-I INDUSTRIAL | | | | SIZE | | A0 | | CODE ID. NO. | | | | | | | |