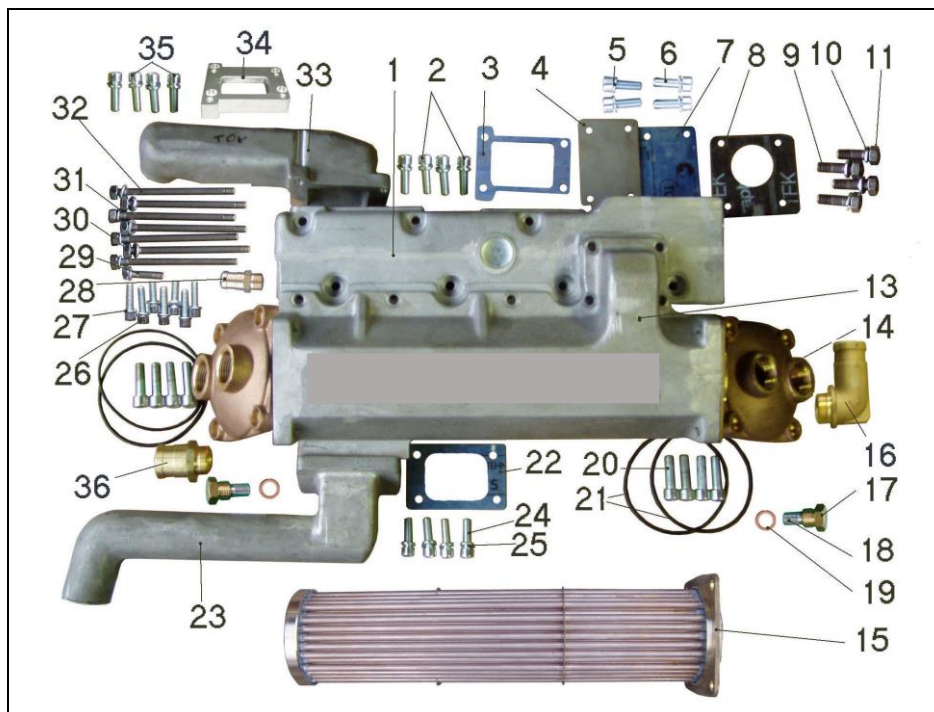


## V 3300 MARINIZATION KIT PARTS LIST

**3300 – 1100 Exhaust gas manifold with 3300 – 1300 heat exchanger**



<b>Pos</b>	<b>Cat.No.</b>	<b>Name</b>	<b>Pcs</b>	<b>Pos</b>	<b>Cat.No.</b>	<b>Name</b>	<b>Pcs</b>
1	3300-1101	Exh.gas manifold housing	1	19	3300-1319	Copper gasket Ø18	2
2	3300-1102	Bolt, M8x30	4	20	3300-1320	Bolt M10x30	8
3	3300-1103	Gasket, F.W. in exh. manifold	2	21	3300-1321	“O” – ring 100x3,5	4
4	3300-1104	Cover plate	1	22	3300-1322	Gasket, F.W. from cooler	1
5	3300-1105	Split washer for M8	16	23	3300-1323	Pipe, F.W. from cooler	1
6	3300-1106	Bolt M8x30	4	24	3300-1324	Bolt, M8x30	4
7	3300-1107	Gasket, cover plate	1	25	3300-1325	Split washer for M8	4
8	3300-1108	Exhaust manifold out gasket	1	26	3300-1326	Bolt, M8x40	7
9	3300-1109	Stud bolt M10x40	4	27	3300-1327	Split washer for M8	7
10	3300-1110	Split washer for M10	4	28	3300-1128	Connection 3/8” – 16	1
11	3300-1111	Nut M10	4	29	3300-1129	Stud bolt, M8x35	1
13	3300-1313	Heat exchanger housing	1	30	3300-1130	Nut, M8	8
14	3300-1314	Heat exchanger cover	2	31	3300-1131	Split washer for M8	8
15	3300-1315	Heat exchanger insert	1	32	3300-1132	Stud bolt, M8x117	7
16	3300-1316	Elbow 1”	1	33	3300-1133	Pipe, F.W. in exh. manifold	1
17	3300-1317	Zn-anode holder	2	34	3300-1134	Spacer-flange	1
18	3300-1318	Zn-anode, 12mm	2	35	3300-1135	Bolt, M8x30	4
				36	3300-1336	S.W. connection 1”- 35	1

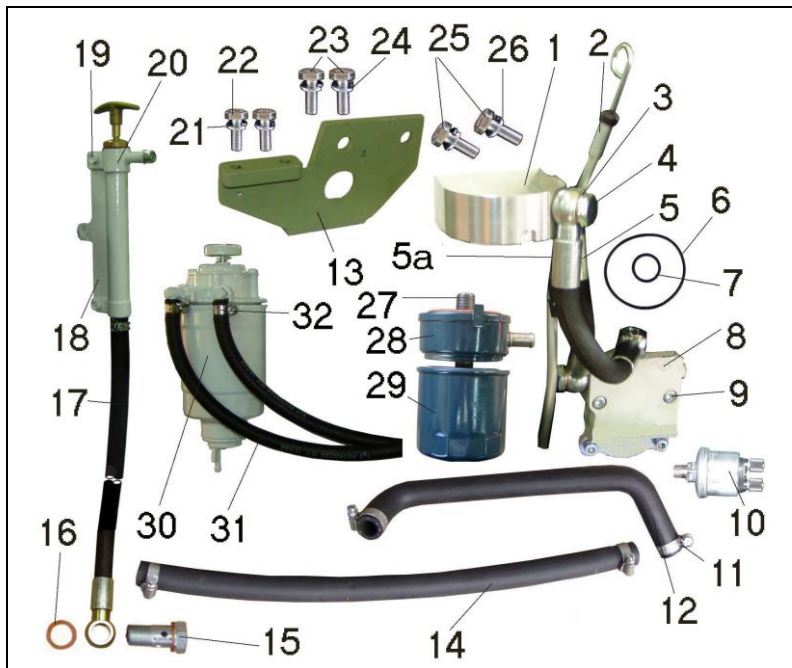
### 3300 – 1200 Expansion vessel with F.W. piping

<u>Pos</u>	<u>Cat.No.</u>	<u>Name</u>	<u>Pcs</u>
1	3300-1201	Expansion vessel	1
2	3300-1202	Exp. vessel bracket	1
3	3300-1203	Exp. vessel plug	1
4	3300-1204	Bolt w. nut, M10x100	2
5	3300-1205	L – bracket holder	1
6	3300-1206	Bolt M6x35	1
7	3300-1207	Air purging hose	1
8	3300-1208	Banjo bolt M10	2
9	3300-1209	Copper gasket Ø10	4
10	3300-1210	Bolt M8x25	3
11	3300-1211	Thermostat cover	1
12	3300-1212	Rubber hose Ø45x60	4
13	3300-1213	Clip 45-60	8
14	3300-1214	Gear cover	1
15	3300-1215	U – pipe	1
16	3300-1216	Y – pipe	1
17	3300-1217	Bolt M12x20	2
18	3300-1218	Split washer for M12	2
19	3300-1219	Plug M10	1
20	3300-1220	Copper gasket Ø10	1
21	3300-1221	Rubber hose 25x130	1
22	3300-1222	Clip 20-32	2
23	3300-1223	Exp. vessel lower bracket	1

### 3300 – 1250 Sea water line with exh. gas riser

<u>Pos</u>	<u>Cat.No.</u>	<u>Name</u>	<u>Pcs</u>
1	3300-1251	Rubber elbow Ø35x100x200	1
2	3300-1252	Clip 30-45	6
3	3300-1253	Rubber elbow Ø35x100x200	1
4	3300-1254	Rubber elbow Ø35x100x100	1
5	3300-1255	Conn. pipe Ø35x50	1
6	3300-1256	Exh. gas riser	1
7	3300-1108	Exh. manifold out gasket	1

### 3300 – 1400 Oil line with 3300 – 1800 Fuel line



Pos	Cat.No.	Name	Pcs	Pos	Cat.No.	Name	Pcs
1	3300-1401	Lube oil filter block	1	17	3300-1417	Hand pump oil suction hose	1
2*	3300-1402	Crankcase oil dipstick	1	18	3300-1418	Oil hand-pump holder	1
3	3300-1403	Copper gasket Ø18	8	19	3300-1419	Bolt M6x20	2
4	3300-1404	Banjo bolt M18	4	20	3300-1420	Oil hand-pump	1
5	3300-1405	Oil pipe L 220	1	21	3300-1421	Split washer for M10	2
5a	3300-1405a	Oil pipe L 270	1	22	3300-1422	Bolt M10x30	2
6	3300-1406	O – ring	1	23	3300-1423	Bolt M12x40	2
7	3300-1407	O – ring	1	24	3300-1424	Split washer for M12	2
8	3300-1408	Oil block-distributor	1	25	3300-1425	Bolt M12x30	2
9	3300-1409	Bolt M8x20; M8x30	2+2	26	3300-1426	Split washer for M12	2
10	3300-1410	Oil press. sensor	1	27	3300-1427	L.O. filter holding pipe	1
11	3300-1411	Clip 12-22	4	28*	3300-1428	L.O. cooler	1
12	3300-1412	Rubber pipe, L.O.cooler	1	29*	3300-1429	L.O. filter cartridge	1
13	3300-1413	Filter holder	1	30*	3300-1830	Fuel filter assy.	1
14	3300-1414	Rubber pipe, L.O.cooler	1	31	3300-1831	Fuel pipe	2
15	3300-1415	Banjo bolt M18	1	32	3300-1832	Clip 8-12	4
16	3300-1416	Copper gasket Ø18	2				

**Notice:** Parts marked with “\*” are original Kubota. Part No. 27 L.O. filter holding pipe is original shortened 11mm

### 3300 – 1600 Air suction

<u>Pos</u>	<u>Cat.No.</u>	<u>Name</u>	<u>Pcs</u>
1	3300-1601	Air suction housing	1
2	3300-1602	Air suction cover	1
3	3300-1603	Bolt M8x75	1
4	3300-1604	Bolt M8x55	1

### 3300 – 2100 Sea water pump mounting

<u>Pos</u>	<u>Cat.No.</u>	<u>Name</u>	<u>Pcs</u>
1	3300-2101	Sea water pump holder	1
2	3300-2102	Tightening nut - inner	1
3	3300-2103	Tightening nut - outer	1
4	3300-2104	Bolt, M8x75	1
5	3300-2105	S.W. connecting coupling	1
6	3300-2106	Bolt-securing, M5x8	1
7	3300-2107	Key	1
8	3300-2108	Bolt, M8x25	2
9	3300-2109	Bolt, M6x16	2
10	3300-2110	Bolt, M8x20	1

### 3300 – 2200 Sea water pump

<u>Pos</u>	<u>Cat.No.</u>	<u>Name</u>	<u>Pcs</u>
1	3300-2201	Pump housing	1
2	3300-2202	Pump insert	1
3	3300-2203	Bolt, M5x14	1
4	3300-2204	Mechanical seal	1
5	3300-2205	Circlip	1
6	3300-2206	Pump cover	1
7	3300-2207	Impeller	1
8	3300-2208	Bolt, M5x10	6
9	3300-2209	Cover gasket	1
10	3300-2210	Bottom washer	1
11	3300-2211	Lipseal 20x36x7	1
12	3300-2212	Key	1
13	3300-2106	Bolt, securing, M5x8	1
14	3300-2105	Connecting coupling	1
15	3300-2215	Circlip	1
16	3300-2216	Ball bearing	2
17	3300-2217	Pump shaft	1

