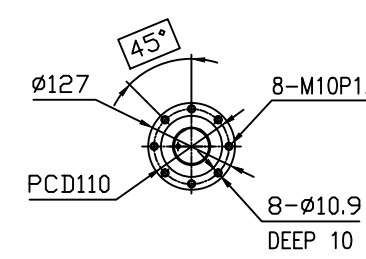
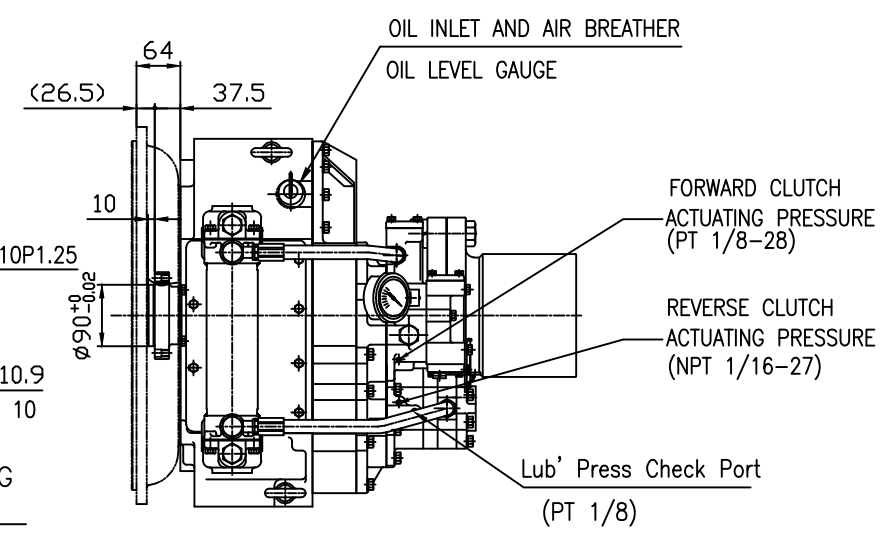


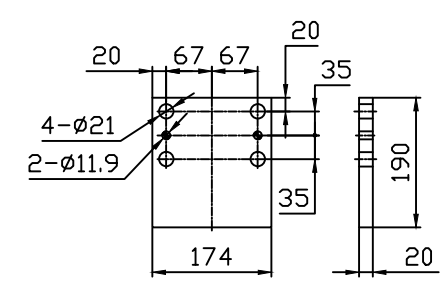
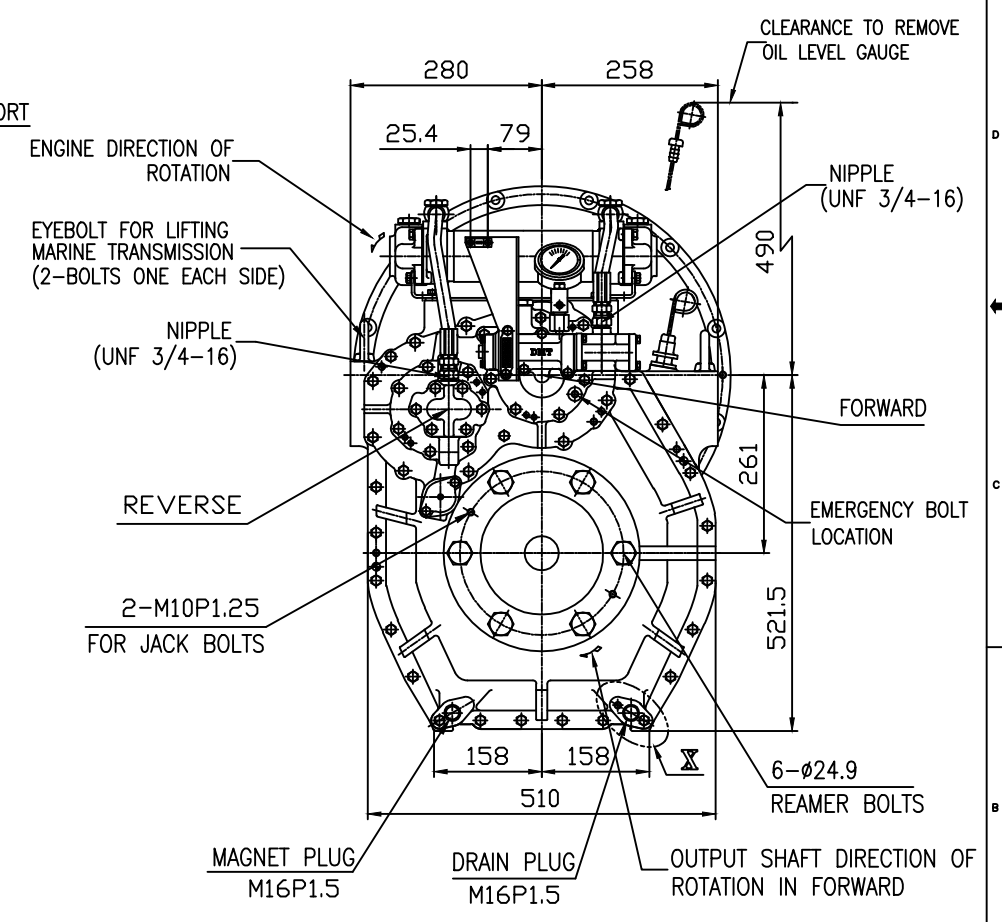
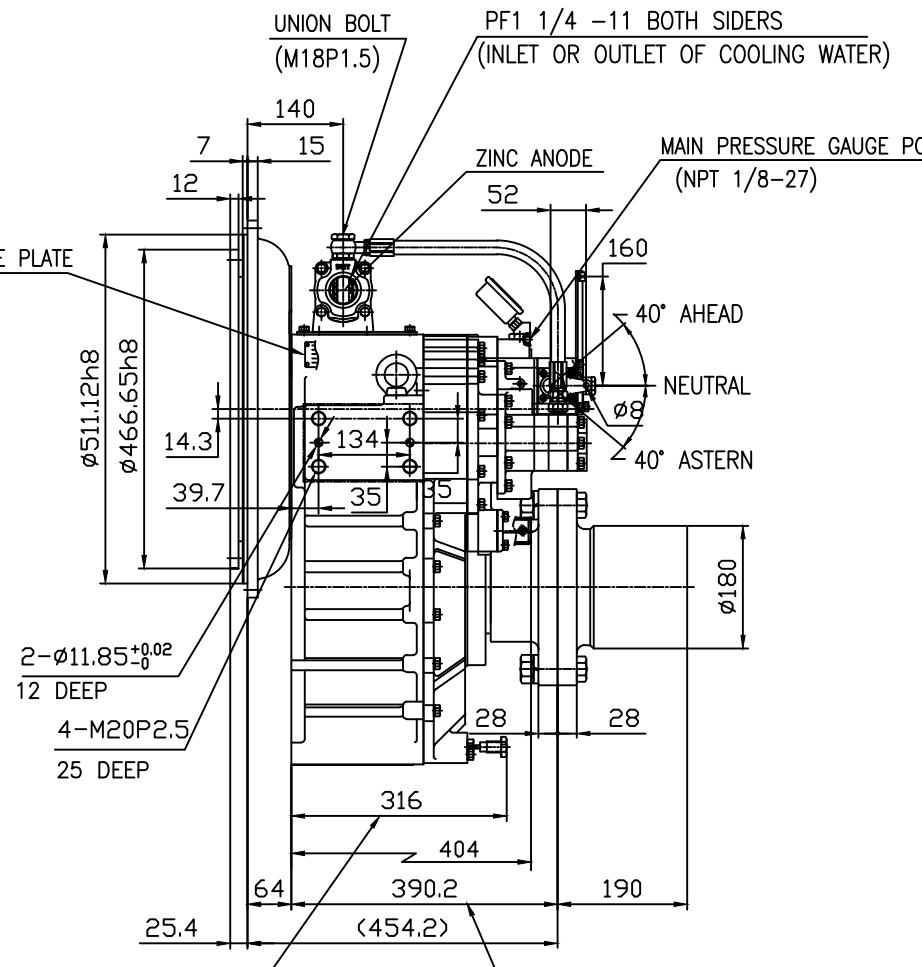
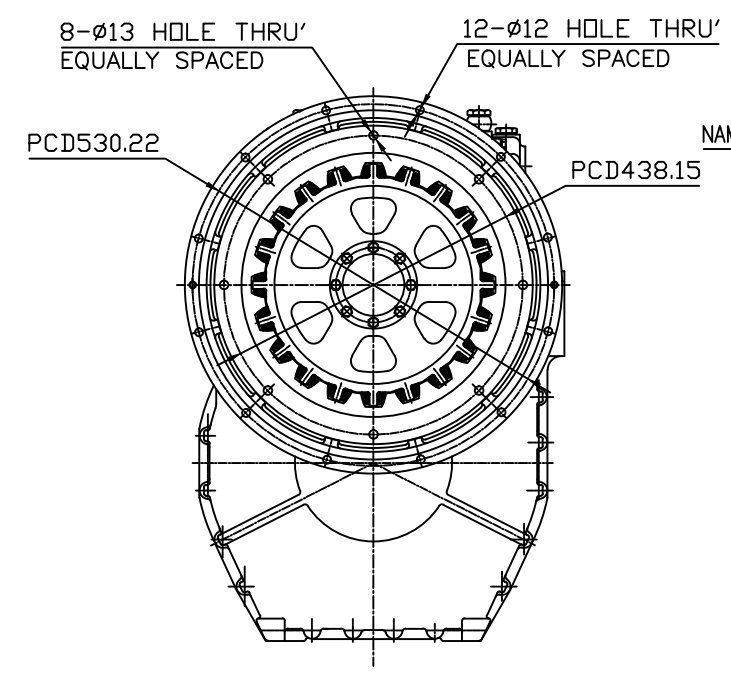
OUTPUT SHAFT COUPLING & PROPELLER COUPLING DIMENSION



INPUT COUPLING DIMENSION

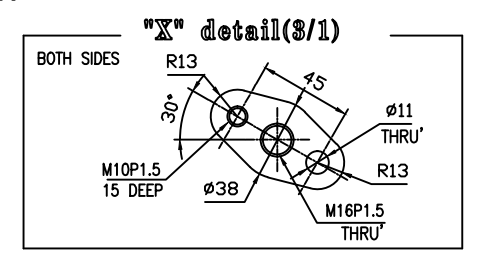


DMT 170HL MARINE TRANSMISSION SPECIFICATION	
GEAR RATIO	4.04, 4.48
TOTAL WEIGHT	APPROX. 352.5 kg(DRY)
OIL CAPACITY	APPROX. 10 L
OIL VISCOSITY	SAE # 30
OIL PRESSURE	1.96 ~ 2.35 MPa CLUTCH OIL
DIRECTION OF ROTATION	INPUT C.C.W VIEWED FROM THE STERN
IN FORWARD	OUTPUT C.W VIEWED FROM THE STERN
OIL CHANGE INTERVAL	THE FIRST 100HOURS OF INITIAL OPERATION AND EVERY 1000HOURS THEREAFTER
SHIFTING LIMIT	UNDER 50% OF THE RATED ENGINE SPEED
OIL COOLER	WATER FLOW 40 ~ 60L/min TEMPERATURE OF COOLING WATER MAX 32°C
OPERATING TORQUE OF SHIFTING LEVER	UNDER 2.94Nm



BRACKET DIMENSION

REMARK
 1.HOUSING: SAE#1
 2.DRIVING RING: SAE 14"
 3.COULING TYPE : RUBBER



TOLERANCE ON DIMENSIONS				NO.	PART NO.	PART NAME	QTY	MATERIAL	SIZE	REMARKS
FRACTIONS	DECIMALS	ANGLES								
±	±	±	±							
1/2	0.125	0.1	0.05							
4	0.16	0.2	0.07							
16	0.063	0.3	0.1							
63	0.25	0.5	0.2							
250	1.0	0.8	0.3							

DATE	2012.06.18	SCALE	N/S
APPROVED BY	JK.Kim	CHECKED BY	KS.Han
DRAWN	KC.Yoon	DESIGNED	

TYPE	DMT170HL	ORIGINAL DWG. NO.	
NAME	MARINE TRANSMISSION	DWG. NO.	17000GHB~C-114RC
SIZE	A 3	CODE ID. NO.	

