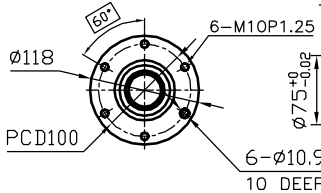
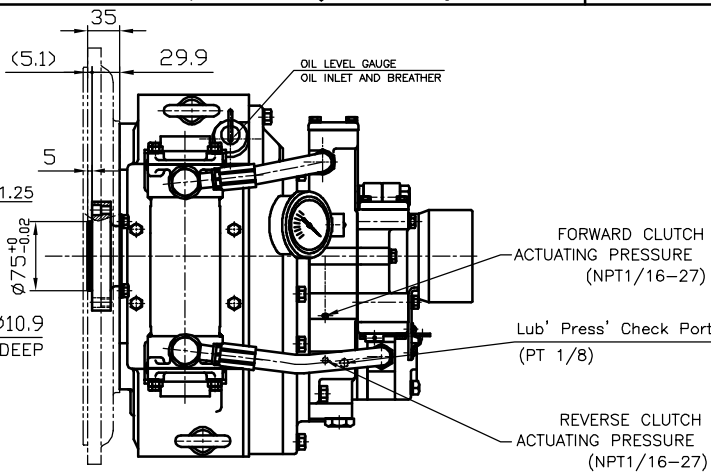


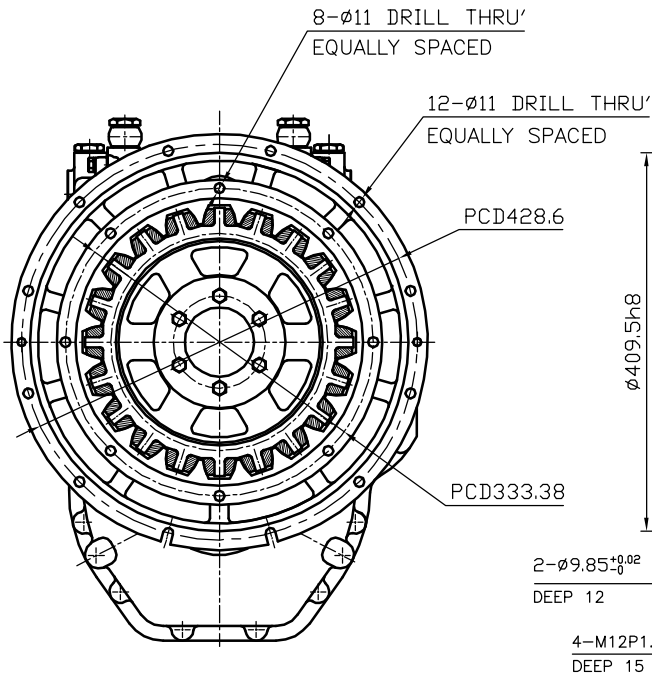
OUTPUT SHAFT COUPLING & PROPELLER COUPLING DIMENSION



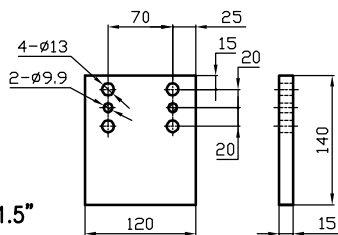
INPUT COUPLING DIMENSION



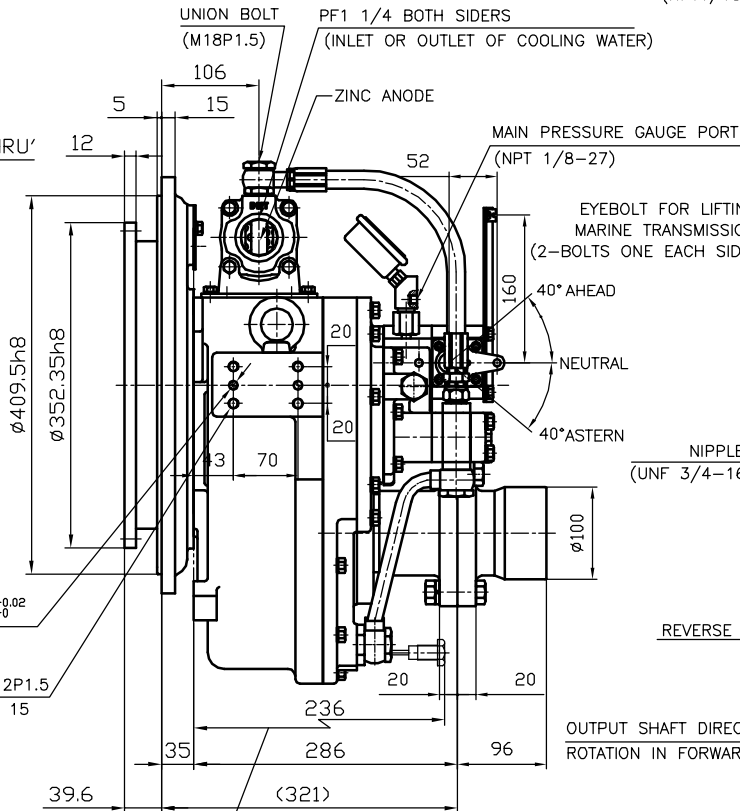
DMT 50A MARINE GEAR SPECIFICATION	
GEAR RATIO	1.61, 2.06, 2.45, 2.82, 3.12, 3.46
TOTAL WEIGHT	APPROX. 143 kg(DRY)
OIL CAPACITY	APPROX. 3L
OIL VISCOSITY	SAE # 30
OIL PRESSURE	1.96 ~ 2.35 MPa CLUTCH OIL
DIRECTION OF ROTATION IN FORWARD	INPUT C.C.W VIEWED FROM THE STERN OUTPUT C.W VIEWED FROM THE STERN
OIL CHANGE INTERVAL	THE FIRST 100HOURS OF INITIAL OPERATION AND EVERY 1000HOURS THEREAFTER
SHIFTING LIMIT	UNDER 50% OF THE RATED ENGINE SPEED
OIL COOLER	WATER FLOW 40 ~ 60L/min TEMPERATURE OF COOLING WATER MAX 32°C
OPERATING TORQUE OF SHIFTING LEVER	UNDER 2.94Nm



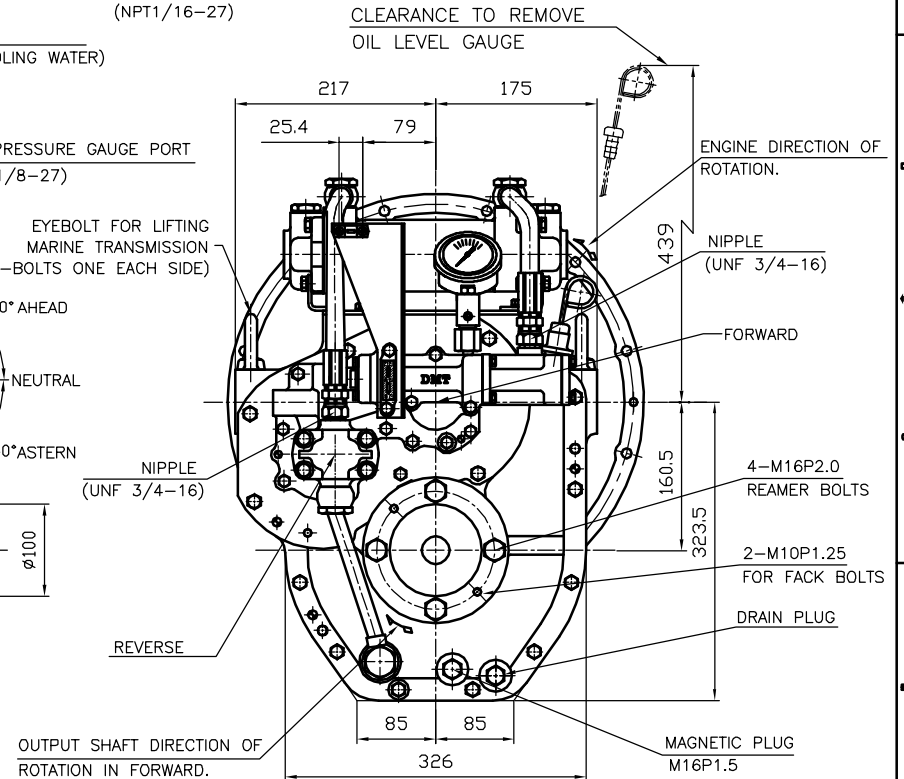
- REMARK
- HOUSING: SAE#3
 - DRIVING RING: SAE 11.5"
 - COUPLING TYPE : RUBBER



BRACKET DIMENSION



CLEARANCE TO REMOVE MAGNET PLUG



OUTPUT SHAFT DIRECTION OF ROTATION IN FORWARD.

TOLERANCE ON		PART NO.		PART NAME		QTY	MATERIAL	SIZE	REMARKS
FRACTIONS	DECIMALS	ANGLES	NO.	NAME	TYPE				ORIGINAL DWG. NO.
±	±	±							
FRAC. 4 이하		± 0.3	± 0.1	SCALE		N/S	DMT50A		
4 16		± 0.5	± 0.2	DATE		2012.06.18	MARINE TRANSMISSION		
16 63		± 0.7	± 0.3	APPROVED BY		JK.Kim	050000A~F-3115RC		
63 250		± 1.2	± 0.5	CHECKED BY		KS.Han	000		
250 1000		± 2.0	± 0.8	DRAWN		KC.Yoon	D-I INDUSTRIAL		
				DESIGNED			SIZE A 3 CODE ID. NO.		