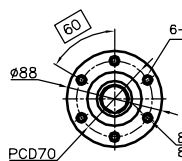
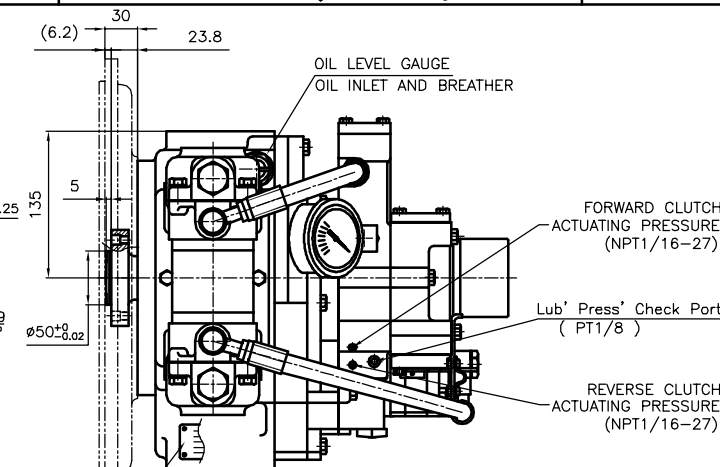


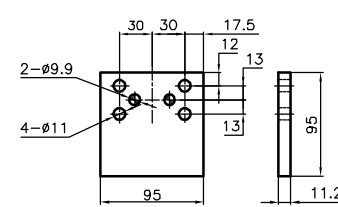
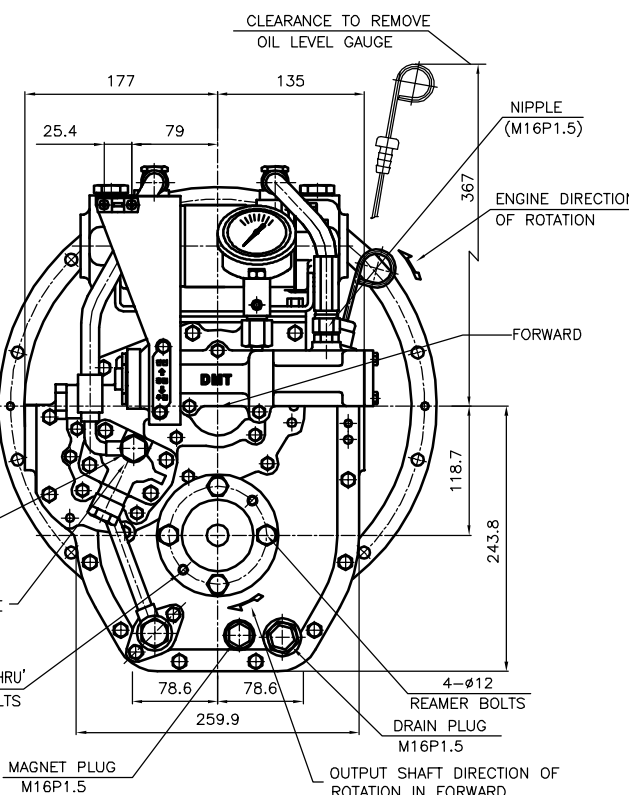
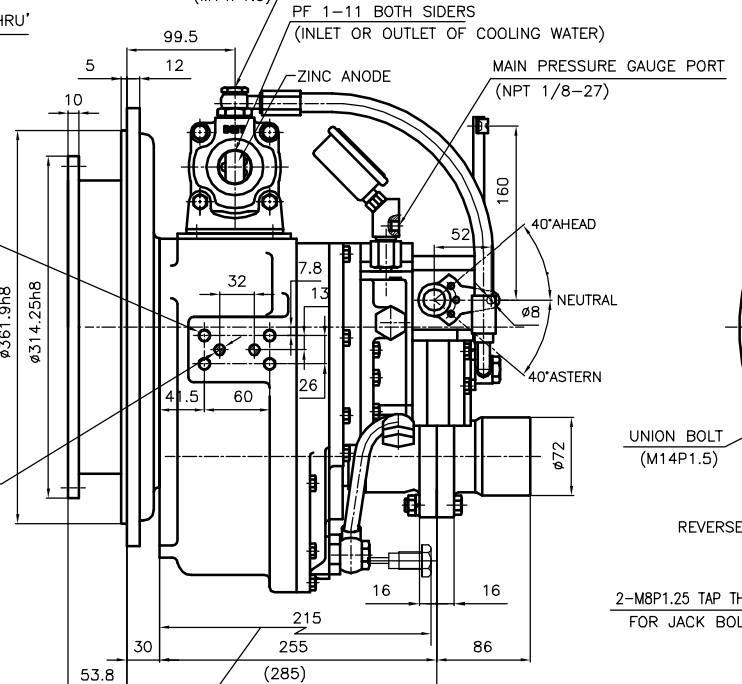
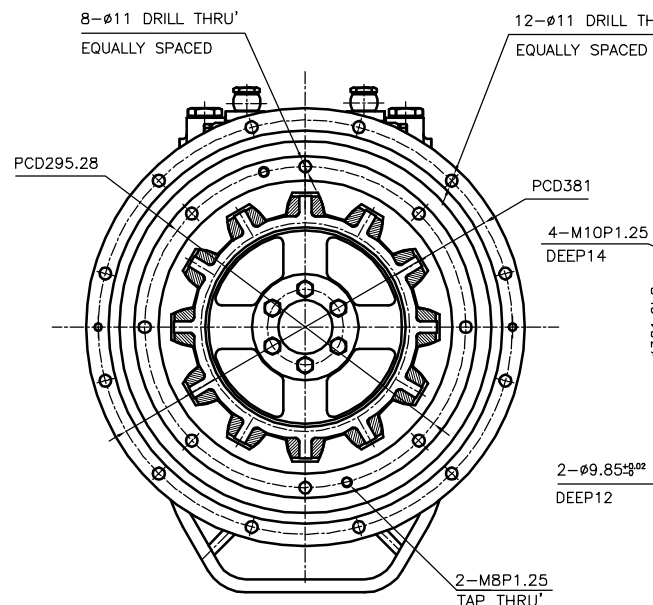
OUTPUT SHAFT COUPLING & PROPELLER COUPLING DIMENSION



INPUT COUPLING DIMENSION



DMT 25AL MARINE TRANSMISSION SPECIFICATION	
GEAR RATIO	1.64, 2.07, 2.52, 2.96, 3.32
TOTAL WEIGHT	APPROX. 77 Kg(DRY)
OIL CAPACITY	APPROX. 2L
OIL VISCOSITY	SAE # 30
OIL PRESSURE	1.96 ~ 2.35 MPa CLUTCH OIL
DIRECTION OF ROTATION IN FORWARD	INPUT C.C.W VIEWED FROM THE STERN OUTPUT C.W VIEWED FROM THE STERN
OIL CHANGE INTERVAL	THE FIRST 100HOURS OF INITIAL OPERATION AND EVERY 1000HOURS THEREAFTER
SHIFTING LIMIT	UNDER 50% OF THE RATED ENGINE SPEED
OIL COOLER	WATER FLOW 20 ~ 40 L/m TEMPERATURE OF COOLING WATER MAX 32°C
OPERATING TORQUE OF SHIFTING LEVER	UNDER 2.94Nm



BRACKET DIMENSION

- REMARK
- HOUSING: SAE#4
 - DRIVING RING: SAE 10"
 - COULING TYPE : RUBBER

TOLERANCE ON			PART NO.		PART NAME		QTY		MATERIAL		SIZE		REMARKS	
FRACTIONS	DECIMALS	ANGLES	NO.											
1/16	0.03125	0.1	DMT25AL ORIGINAL DWG. NO.											
1/32	0.015625	0.05	DMT25AL MARINE TRANSMISSION											
1/64	0.0078125	0.025	025000LA~E-410RC											
1/128	0.00390625	0.0125	D-I INDUSTRIAL											
1/256	0.001953125	0.00625	A 3											