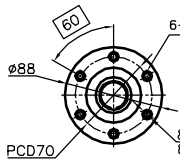
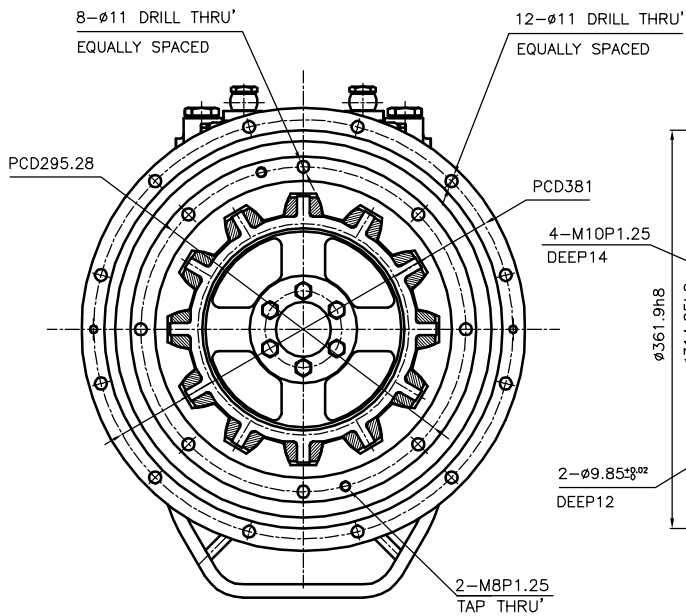


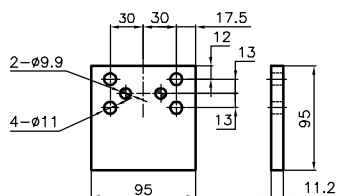
OUTPUT SHAFT COUPLING & PROPELLER COUPLING DIMENSION



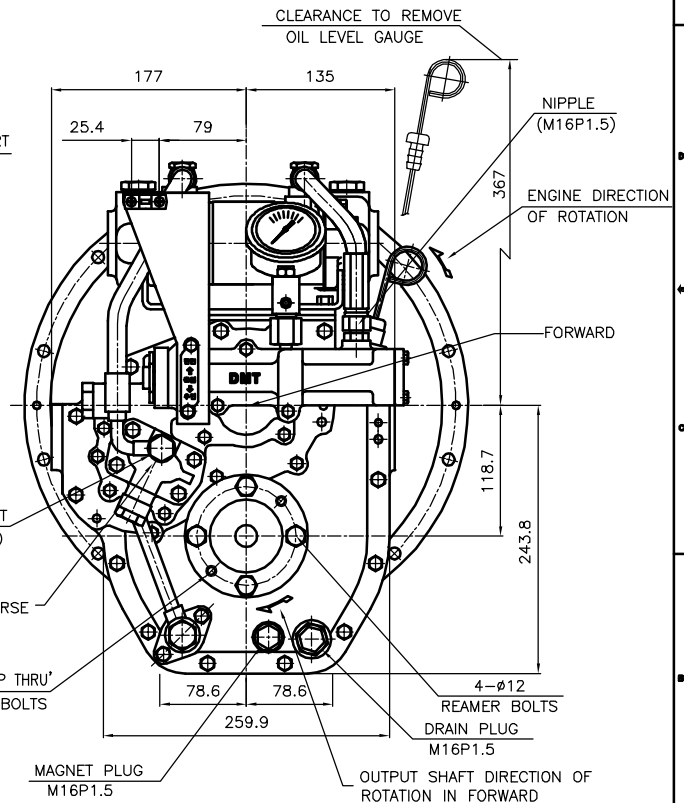
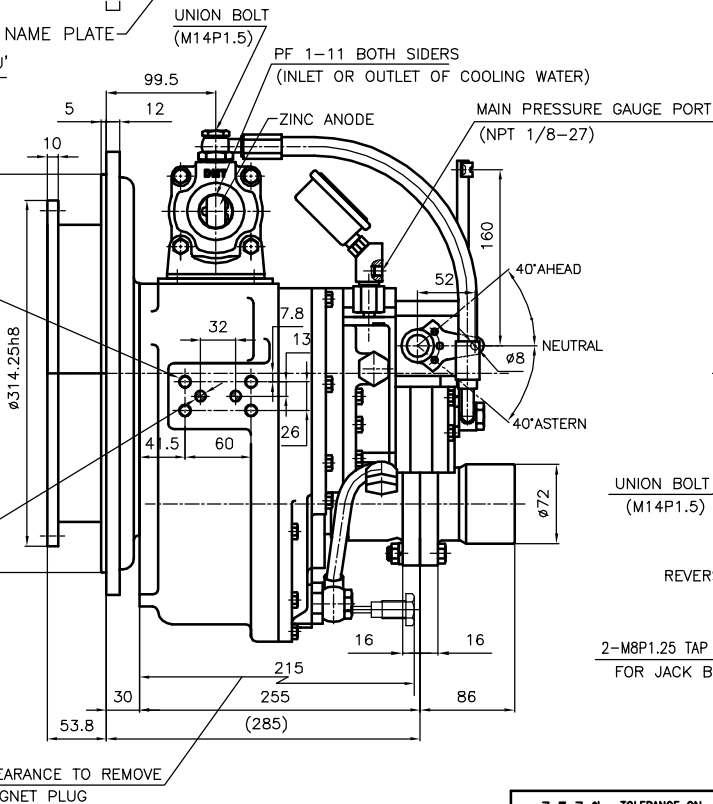
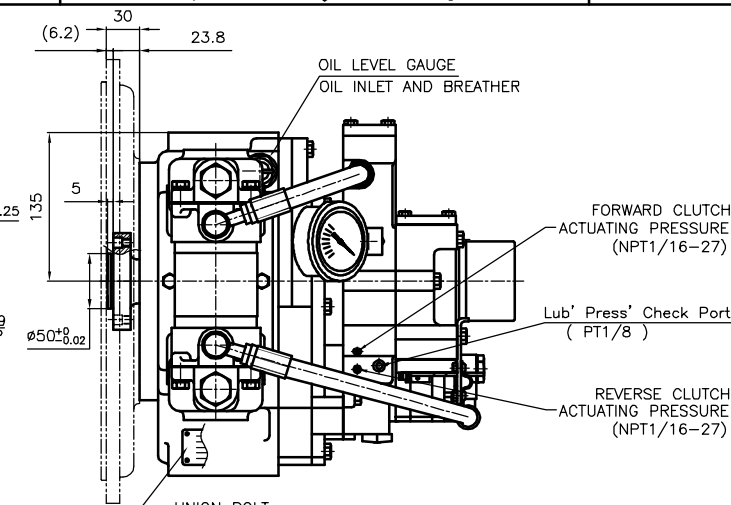
INPUT COUPLING DIMENSION



- REMARK**
- 1.HOUSING: SAE#4
 - 2.DRIVING RING: SAE 10"
 - 3.COULING TYPE : RUBBER



BRACKET DIMENSION



| DMT 18A MARINE TRANSMISSION SPECIFICATION | | |
|---|--|---------------------------|
| GEAR RATIO | 1.64, 2.17, 2.52, 3.13, 3.32 | |
| TOTAL WEIGHT | APPROX. 77 Kg(DRY) | |
| OIL CAPACITY | APPROX. 2L | |
| OIL VISCOSITY | SAE # 30 | |
| OIL PRESSURE | 1.96 ~ 2.35 MPa | CLUTCH OIL |
| DIRECTION OF ROTATION | INPUT | C.W VIEWED FROM THE STERN |
| | OUTPUT | C.W VIEWED FROM THE STERN |
| OIL CHANGE INTERVAL | THE FIRST 100HOURS OF INITIAL OPERATION AND EVERY 1000HOURS THEREAFTER | |
| SHIFTING LIMIT | UNDER 50% OF THE RATED ENGINE SPEED | |
| OIL COOLER | WATER FLOW 20 ~ 40 L/m | |
| | TEMPERATURE OF COOLING WATER | MAX 32°C |
| OPERATING TORQUE OF SHIFTING LEVER | UNDER 2.94Nm | |

| TOLERANCE ON | | | PART NO. | | PART NAME | | QTY | | MATERIAL | | SIZE | | REMARKS | |
|--------------|----------|--------|----------|------|---------------------|------|-----|--|----------|--|------|--|---------|--|
| FRACCTIONS | DECIMALS | ANGLES | NO. | REV. | NO. | REV. | | | | | | | | |
| ±0.05 | ±0.05 | ±0.1 | 001 | 01 | DMT18A | 01 | | | | | | | | |
| ±0.05 | ±0.05 | ±0.1 | 002 | 01 | MARINE TRANSMISSION | 01 | | | | | | | | |
| ±0.05 | ±0.05 | ±0.1 | 003 | 01 | DMT18A | 01 | | | | | | | | |
| ±0.05 | ±0.05 | ±0.1 | 004 | 01 | MARINE TRANSMISSION | 01 | | | | | | | | |
| ±0.05 | ±0.05 | ±0.1 | 005 | 01 | DMT18A | 01 | | | | | | | | |
| ±0.05 | ±0.05 | ±0.1 | 006 | 01 | MARINE TRANSMISSION | 01 | | | | | | | | |
| ±0.05 | ±0.05 | ±0.1 | 007 | 01 | DMT18A | 01 | | | | | | | | |
| ±0.05 | ±0.05 | ±0.1 | 008 | 01 | MARINE TRANSMISSION | 01 | | | | | | | | |
| ±0.05 | ±0.05 | ±0.1 | 009 | 01 | DMT18A | 01 | | | | | | | | |
| ±0.05 | ±0.05 | ±0.1 | 010 | 01 | MARINE TRANSMISSION | 01 | | | | | | | | |