

Marine Pleasure CURSOR 13

Rating type A1:	607 kW (825 HP) @ 2400 rpm
Rating type A2:	552 kW (750 HP) @ 2400 rpm
Rating type B:	478 kW (650 HP) @ 2400 rpm
Rating type C:	442 kW (600 HP) @ 2400 rpm

SPECIFICATIONS

Thermodynamic cycle		Diesel 4 stroke
Air handling		TCA
Cylinders arrangement		6L
Bore x Stroke	millimeters	135 x 150
Total displacement	liters	12.9
Valves per cylinder	number	4
Cooling System		liquid
Direction of Rotation (viewed facing flywheel)		CCW
Engine management		by EDC (Electronic Diesel Control)
Injection System		EUI

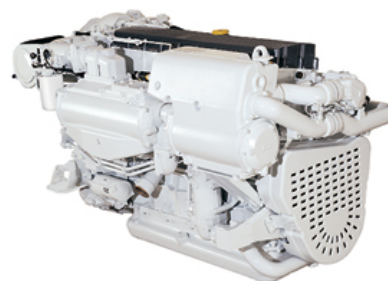
WEIGHT AND DIMENSIONS

Dimensions	LxWxH (mm)	465 x 1000 x 1058
Dry Weight	Kg	1395

DIMENSIONS CAN BE CHANGED ACCORDING TO ENGINE OPTIONS

STANDARD CONFIGURATION

Flywheel housing	type	SAE 1
Flywheel size	inch	14"
Air filter		rear side
Turbocharger	e Gate (water cooled) Turbo in parallel with Aftercooler (TAA)	
Heat exchanger		tube type
Exhaust gas water mixer - Exhaust cooled elbow		-
Water charge tank		included
Fuel filter	number	1 - right side
Fuel prefilter		included (loose)
Fuel pump		1 - gear driven
Oil filter	number	2
Oil sump		aluminium
Oil vapours blowby circuit		included
Oil heat exchanger		included
Oil filler		by cylinder head cover
Starter		24V - 5.5kW
Alternator		28 V - 90 A
Engine stop device		by electronic central unit
Wiring harness		with negative to ground connection
Painting color		white "ICE"



IMAGES SHOWN ARE FOR ILLUSTRATION PURPOSE ONLY

ELECTRICAL SYSTEM

Voltage	V	24
---------	---	----

NOT INCLUDED IN STANDARD CONFIGURATION

Battery - minimum capacity recommended	Ah	2 x 180 Ah
Battery - minimum cold cranking capacity recommended	Ah	1200 Ah

LEGEND

Arrangement	Air Handling	Turbocharger	Injection System	Exhaust System
L (in line)	TCA (Turbocharged with aftercooler)	WG (Wastegate)	M (Mechanical)	EGR (Exhaust Gas Recirculation)
V (90° "V" configuration)	TC (Turbocharged)	VGT (Variable Geometry Turbocharger)	ECR (Electronic Common Rail)	SCR (Selective Catalytic Reduction)
	NA (Naturally Aspirated)	TST (Twin Stage Turbocharger)	EUI (Electronic Unit Injector)	
			MPI (Multi Point Injection)	

A1	High Performance Crafts. Full throttle operation restricted within 10% of total use period. Cruising speed at engine rpm <90% of rated speed setting - Maximum usage 300 hours per year.
A2	Pleasure Commercial Vessels. Full throttle operation restricted within 10% of total use period. Cruising speed at engine rpm <90% of rated speed setting - Maximum usage 1000 hours per year.
B	Light Duty: Full throttle operation restricted within 10% of use period. Cruising speed at engine rpm <90% of rated speed setting - Maximum usage 1500 hours per year.
C	Medium Duty: Full throttle operation < 25% of use period. Cruising speed at engine rpm <90% of rated speed setting - Maximum usage 3000 hours per year.
D	Heavy Duty

FOR INFORMATION ON THE AVAILABLE RATINGS NOT LISTED IN THIS DOCUMENT PLEASE CONTACT THE FPT INDUSTRIAL SALES NETWORK OR VISIT OUR SITE WWW.FPTINDUSTRIAL.COM

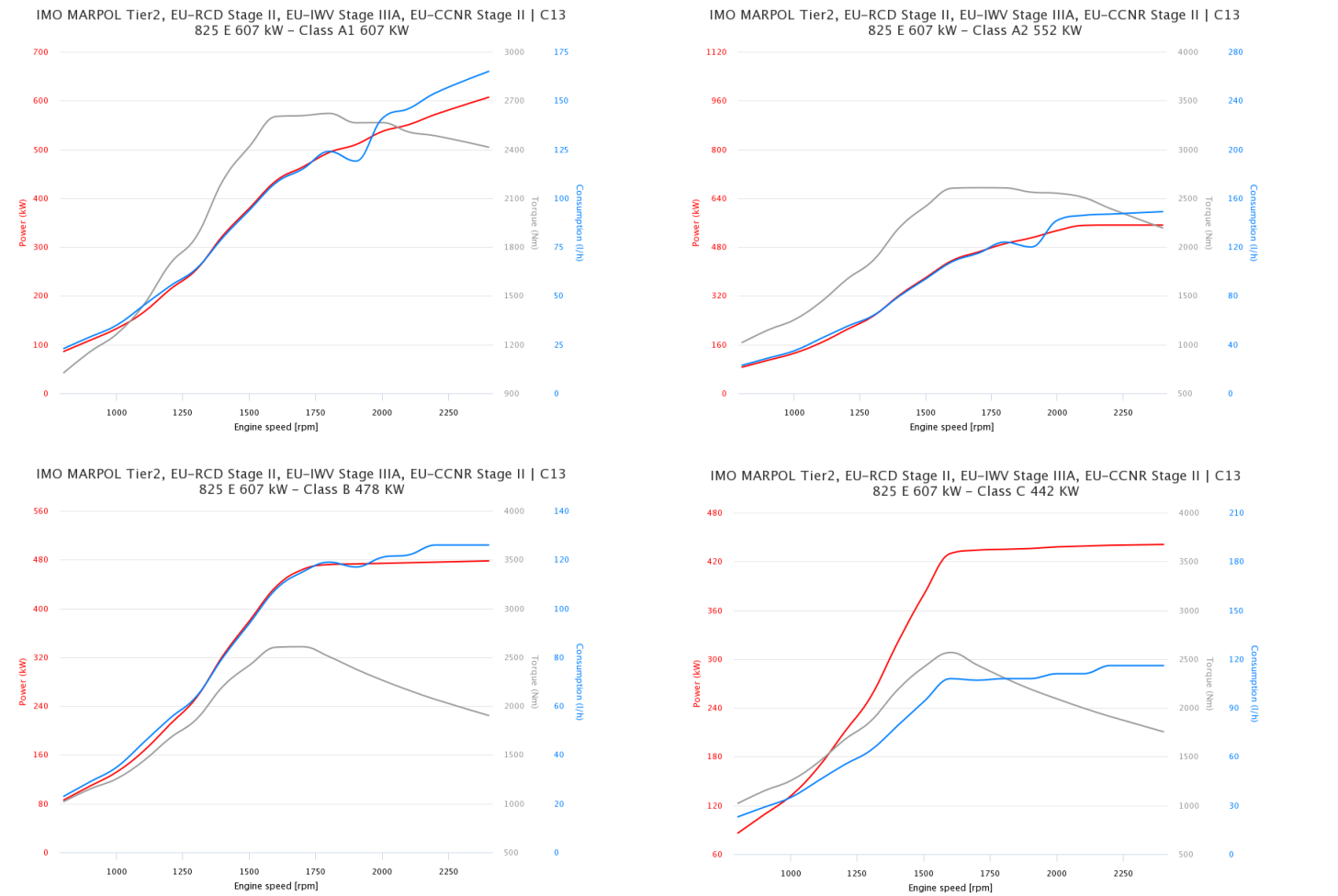
SPECIFICATION SUBJECT TO CHANGE WITHOUT NOTICE



RATING TYPE		A1	A2	B	C
Maximum power [*]	kW (HP)	607 (825)	552 (750)	478 (650)	442 (600)
At speed	rpm	2400	2400	2400	2400
Maximum no load governed speed at max rating	rpm	2580	2580	2580	2580
Minimum idling speed	rpm	600	600	600	600
Mean piston speed at rated speed	m/s	12	12	12	12
BMEP at max power	bar	22.5	20.5	17.8	16.4
Specific fuel consumption at full load (best value)	g/kWh @ rpm	229.1	227.5	220.7	221.6
Oil consumption at max rating	(% of fuel con		= 0.2		
Minimum starting temperature without auxiliaries	°C		-10°		
Oil and oil filter maintenance interval for replacement	hours		600		

* Net Power at flywheel according to ISO 3046/1, after 50 hours running, Fuel Diesel EN 590. Power tolerance 5%.

POWER & TORQUE



LEGEND

Arrangement	Air Handling	Turbocharger	Injection System	Exhaust System
L (in line)	TCA (Turbocharged with aftercooler)	WG (Wastegate)	M (Mechanical)	EGR (Exhaust Gas Recirculation)
V (90° "V" configuration)	TC (Turbocharged)	VG (Variable Geometry Turbocharger)	ECR (Electronic Common Rail)	SCR (Selective Catalytic Reduction)
	NA (Naturally Aspirated)	TST (Twin Stage Turbocharger)	EUI (Electronic Unit Injector)	
			MPI (Multi Point Injection)	

- A1** High Performance Crafts. Full throttle operation restricted within 10% of total use period. Cruising speed at engine rpm <90% of rated speed setting - Maximum usage 300 hours per year.
- A2** Pleasure Commercial Vessels. Full throttle operation restricted within 10% of total use period. Cruising speed at engine rpm <90% of rated speed setting - Maximum usage 1000 hours per year.
- B** Light Duty: Full throttle operation restricted within 10% of use period. Cruising speed at engine rpm <90% of rated speed setting - Maximum usage 1500 hours per year.
- C** Medium Duty: Full throttle operation < 25% of use period. Cruising speed at engine rpm <90% of rated speed setting - Maximum usage 3000 hours per year.
- D** Heavy Duty

FOR INFORMATION ON THE AVAILABLE RATINGS NOT LISTED IN THIS DOCUMENT PLEASE CONTACT THE FPT INDUSTRIAL SALES NETWORK OR VISIT OUR SITE WWW.FPTINDUSTRIAL.COM

SPECIFICATION SUBJECT TO CHANGE WITHOUT NOTICE

